



# SECULORE OVERWATCH™

## MANAGED CYBERSECURITY MONITORING DESIGNED FOR PUBLIC SAFETY:

Cyber attacks against public safety agencies are exponentially increasing in frequency and sophistication. It's not a matter of "if" you will be attacked but "when" and "how" it will impact you. SecuLore's OverWatch solution simplifies cybersecurity monitoring for public safety agencies and local governments by empowering IT teams with the expert resources needed to protect our nation's mission-critical infrastructure.



24x7x365 cybersecurity monitoring with cutting edge technology and a team of experts who understand your mission.

## A NEW LAYER OF CYBERSECURITY

### BEHAVIOR-BASED CYBERSECURITY

- SecuLore OverWatch offers the next level of behavior-based cybersecurity monitoring, customized specifically for public safety and designed to identify threats often missed by other layers of security.
- Utilizing our extensive experience identifying cyber attacks across the country, SecuLore's behavior-based methodologies are continually updated to stay a step ahead of cyber threats.

### PATENTED TECHNOLOGY

- SecuLore's patented Paladin™ device is at the heart of our OverWatch solution, integrating seamlessly with existing security and network infrastructure. This agentless, layer 2 cybersecurity technology is developed and manufactured at SecuLore headquarters in Odenton, Maryland, USA.

### COLLABORATIVE THREAT DETECTION

- OverWatch includes dedicated SOC cybersecurity experts who identify, and verify cyber threats on your behalf, provide resources, guidance, and partner with your IT team to fortify your cyber posture.



Together We **CYBER-PROTECT** Our Nation's Critical Infrastructure

# Why SecuLore OverWatch™



- ✓ **Dedicated cyber analysts who know your network**
- ✓ **Cybersecurity monitoring and alert analysis 24x7x365**
- ✓ **Cybersecurity network activity reports**
  - Weekly in-depth customized report indicates vulnerabilities and remediation recommendations
- ✓ **Direct contact for critical vulnerabilities**
- ✓ **SecuLore support included. No maintenance or replacement fees.**
- ✓ **Incident response**
- ✓ **Remote network traffic visualization and access to your network 24x7x365**
- ✓ **Capture and save suspicious data**
- ✓ **Paladin™ locally stores data that can be accessed for in-depth forensic analysis with one click**
- ✓ **Enhance your IT resources**
  - Verify firewall configuration
  - Validate security protocols
  - Verify vendor network traffic
  - Validate compliance policy requirements
  - Identifies external and lateral traffic
  - Validate that closed networks are truly closed

## YOUR TRUSTED CYBERSECURITY EXPERTS

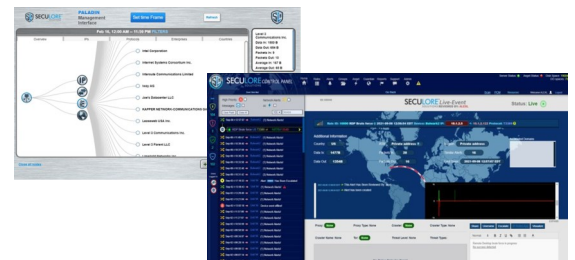
An innovator in public safety focused cybersecurity, SecuLore Solutions is passionate about protecting critical services from cyber criminals.

Led by trusted experts in public safety technology and cyber warfare, our team actively contributes to cybersecurity guidelines and policies for numerous formative organizations.

SecuLore has provided thought leadership, cybersecurity expertise, and subject matter insights for the Federal Communications Commission's (FCC) Task Force for Optimal PSAP Architecture (TFOPA), NENA i3 Working Group, APCO Cybersecurity Training, CSRIC VII, CSRIC VIII, Maryland 911 Commission, the Maryland Sub-Committee for Cybersecurity and the iCert Board of Directors.

## LEARN HOW SECULORE CAN ENHANCE YOUR RISK POSTURE

Contact your **ZETRON** relationship representative to learn more.



Together We **CYBER-PROTECT** Our Nation's Critical Infrastructure